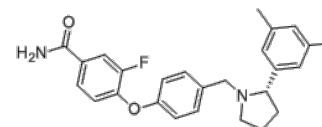


**Product Name** : LY 2456302  
**Cat. No.** : PC-62110  
**CAS No.** : 1174130-61-0  
**Molecular Formula** : C<sub>26</sub>H<sub>27</sub>FN<sub>2</sub>O<sub>2</sub>  
**Molecular Weight** : 418.512  
**Target** : Opioid Receptor  
**Solubility** : 10 mM in DMSO



## Biological Activity

LY 2456302 (CERC-501, JSPA 0658, Aticaprant) is a potent, selective, short-acting antagonist of **κ-opioid receptor (KOR)** with K<sub>i</sub> of 0.81 nM.

LY 2456302 (CERC-501, JSPA 0658, Aticaprant) displays >30-fold selectivity over MOR and DOR.

LY 2456302 (CERC-501, JSPA 0658, Aticaprant) selectively and potently occupies central kappa opioid receptors in vivo (ED<sub>50</sub>=0.33 mg/kg).

LY 2456302 (CERC-501, JSPA 0658, Aticaprant) produces antidepressant-like effects in the mouse forced swim test and enhanced the effects of imipramine and citalopram.

LY 2456302 (CERC-501, JSPA 0658, Aticaprant) shows orally-bioavailability and excellent pharmacokinetic properties.

## References

Rorick-Kehn LM, et al. *Neuropharmacology*. 2014 Feb;77:131-44.

Jackson KJ, et al. *Neuropharmacology*. 2015 Oct;97:270-4.

Naganawa M, et al. *J Pharmacol Exp Ther*. 2016 Feb;356(2):260-6.

**Caution: Product has not been fully validated for medical applications. Lab Use Only!**

E-mail: tech@probechem.com